

Golf Club

Resort

Corporate
Offices

Hotel



Architectural Woodwork Institute

design solutions

Spring 2025 | \$6.25

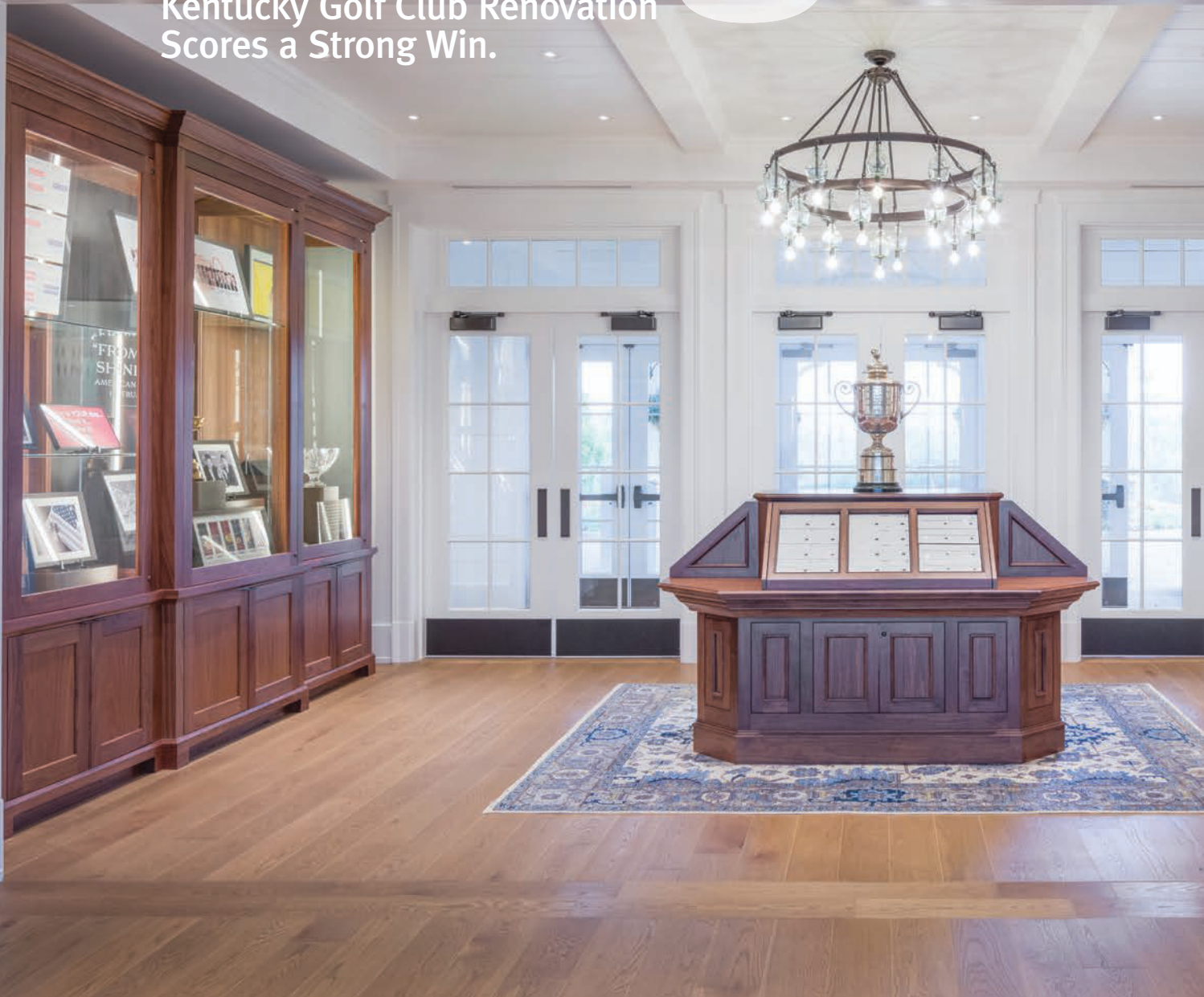


OUR CHA	
1996	MARK BRO
2000	TIGER WO
2004	HALE IRWI
2008	USA
2012	TOM WATS
2016	RORY MCIL
2020	AKSHAY BH
2024	ANNA DAVI
2028	XANDER SCH

©1986

Hole-In-One Design.

Kentucky Golf Club Renovation
Scores a Strong Win.





Valhalla Golf Club in Louisville, Kentucky, opened for play in 1986. The club is golf only, with no pool or tennis court, so the main focus is providing a championship golf experience. Valhalla is known around the world as the host of some of golf's most exciting major championships including four PGA Championships, two Senior PGA Championships and The Ryder Cup.



at a glance

AWI MANUFACTURING MEMBER:

Leininger Cabinet & Woodworking, Inc.

LOCATION:

Lexington, Kentucky

ESTABLISHED:

1950

FACILITY:

36,000 square feet

EMPLOYEES:

16

**Licensed
QCP Manufacturer**

The building was originally constructed in 1996. A small interior renovation was done in 2007 and a more major interior renovation in 2017. The look and feel of the previous renovations were more of a commercial building which lacked inviting and homelike characteristics. This latest renovation has taken the experience to a new level with a design and features which celebrate both the club's Kentucky heritage and history of championship golf.

This newest renovation was conducted by Rustem Kupi Architect, P.A., Delray Beach, Florida, with architectural woodwork for the project fabricated by Leininger Cabinet & Woodworking, Inc., an AWI member firm located in Lexington, Kentucky.

Kentucky Home Design

The project involved interior and exterior renovation comprising over 12,000 square feet of interior space, as well as extensive basement and exterior renovations. With the ambitious goal of finalizing completion prior to the 2024 PGA Championship, the vast renovation followed a hurried timeline from schematic design to final completion with a turn-around time of approximately one year.

"The design was intended to evoke historic Kentucky bluegrass vernacular inspired by the history surrounding Valhalla and Louisville," explains Kupi. "The design aimed at creating the comfort of one's own home, despite functioning as a large gathering space, appearing as a welcoming, sophisticated, and inviting atmosphere. We wanted guests to feel at home while enjoying Valhalla's interior lounge or gathering for a drink on the porch - reminiscent of the layers of history surrounding Valhalla, the joy of golf, and 'The Bluegrass State'."





Objectives were achieved, he continues, through materials, forms, and details designed to reference local architectural landmarks and the history of golf. “The custom door entablatures in the Lounge were designed according to historic Kentucky Bluegrass Home architectural plates, incorporating shaker style motifs and quarter circle profiles. In the Lobby, Oak trophy cases were designed with reference to Augusta and Arnold Palmer’s Master displays. At the heart of the Lounge, the Bourbon Bar stands as an eye-catching gathering space. We considered a wide variety of references and details while designing the bar, sympathetic to Kentucky distilleries and the making of bourbon. We wanted the design to not only embody the aura the owners hoped to create but also embrace the process of and technique of local practices.”

Poplar and White Oak

Leininger Cabinet & Woodworking provided all the trim from the bottom to the very top of the cupola, including all the tongue and groove paneling, the bar, the conference room casework and the trophy cases, and renovated the existing pro shop counter. The firm also supplied custom wood HVAC return air vent covers which were run on the CNC, as was the linear air supply grill in the continuous wood moulding that ran hidden in the crown trim along the perimeter wall of the entire octagonal lounge.



WHITE OAK

All the paneling is 1” x 12” finger jointed yellow Poplar chosen because the architect did not want any visible horizontal joints between boards, explains John Leininger. “The 70+/- foot rise to the top of the cupola called for the widest boards we could get to look proportional to the height. Because you cannot get many 16-foot boards, especially 12-inch wide, the solution was to use a finger joint material to stretch a few boards where needed.”

The bar and bar top were made with White Oak for a rustic look. The 19’ x 21” wide bar top was made of solid 6/4 x 16’ boards that were centered in the bar top. “We laced the return ends into the seven-inch-wide boards to avoid a long miter at the corners,” he continues. “The front of the bar is also White Oak with leather wrapped ceramic tiles as the inlays. This was done by holding the panels out and having them tiled in house.”



The two trophy cases on either side of the entrance are made of American Black Walnut, a wood that has always been used in fine Kentucky furniture. The lumber and veneers were hand selected for color and grain match.

Bourbon Bar

The Bourbon Bar is a solid White Oak, hand selected by Leininger according to grain, coloring, and knot frequency. The finish was intended to remain patinaed yet refined, emulating an Oak barrel used in making bourbon, evoking a sense of history. The trophy cases are more refined in polished and stained Walnut, honoring the formality and shine of the awards which they display.

“The Bourbon Bar is an extremely intricate and noteworthy accomplishment by Leininger due to its multiplicity of function, sizing, material, and details,” says Kupi. “The design was coordinated to perfectly space shelving for specifically curated bourbon bottles, include display for several televisions, accommodate numerous commercial kitchen appliances and beverage dispensers, all the while retaining the high-quality hand crafted residential feel and providing the welcoming vision of the interior. The curved base cabinets were meticulously crafted to incorporate smooth bullnose edge profiles and inset panels while seamlessly radiating across each corner.

The diverse materials – solid Oak, woven leather panels, metal edging, and antique brass detailing – help unify the design and highlight the fine craftsmanship of the cabinets.”

The bar is the most noteworthy part of the project, adds Leininger. “All radiused ends on the front

and back bars had to be solid wood as well as the crown, base and bar trim. This meant steaming and hand bending long corners and veneering the curved bar front panels. The most technical assistance we provided was figuring out how to best build the complicated bars and make them look how the designers



wanted. We needed to be sure all the different materials came together and looked right, fitting the existing bar equipment into the space. Also laying out the ceiling pin lights so that they centered in each plank in the right pattern took a lot of thought.”

Winning Team

“Leininger Woodworking was an extremely talented, respectful, and timely firm to work alongside throughout the entire process,” says Kupi. “Other firms were discouraged by such a quick turnaround amidst extremely detailed drawings,

yet Leininger took on the ambitious project head-first, eager to create the beautiful result for which we all yearned. Their responsiveness and attention to detail is what helped create the Valhalla that members are so proud to be a part of today.”

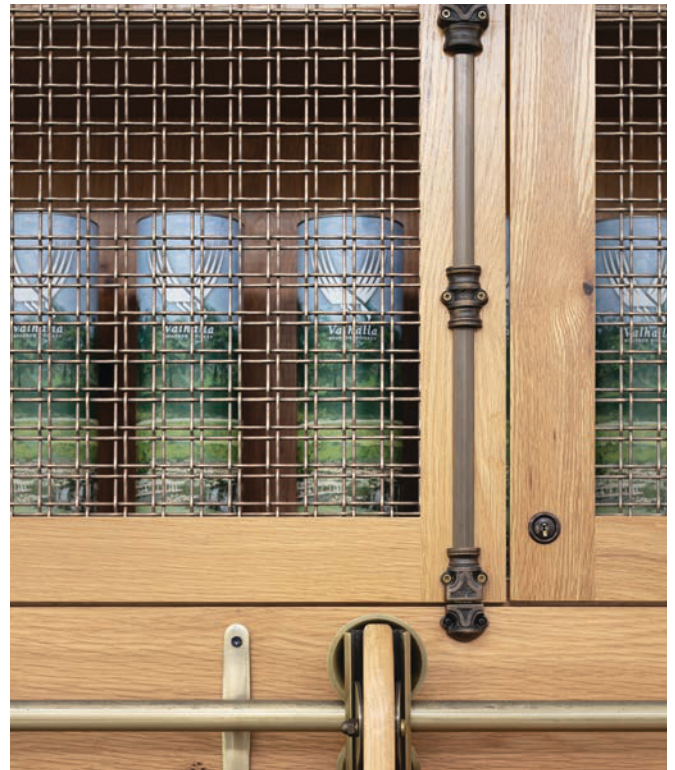
“I found the architect to be very knowledgeable about our industry, in that he knew materials and what works and what doesn’t,” adds Leininger. “He was very congenial to work with and was willing to collaborate.”





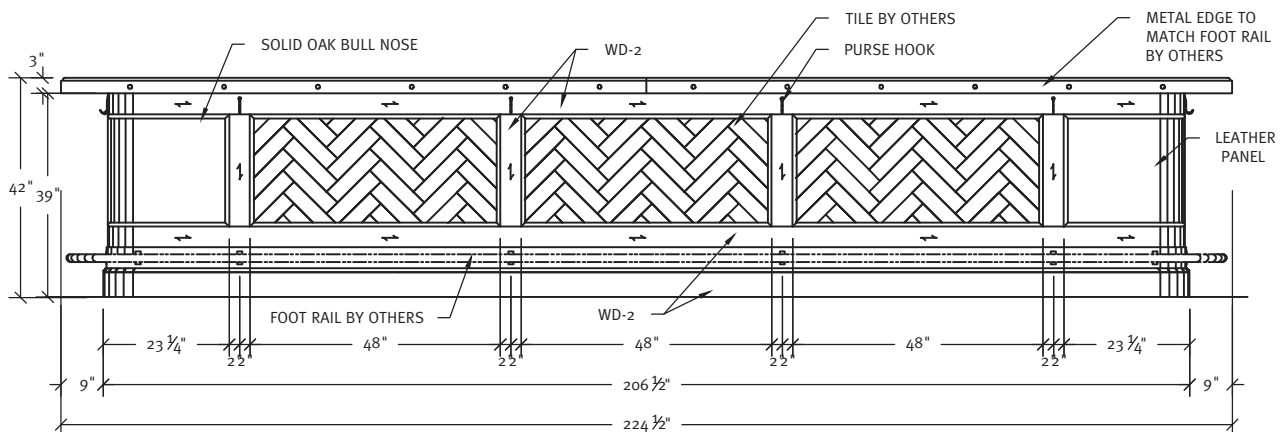
“What makes us who we are? Exceptional quality combined with assured timeliness. It’s the norm in every project we undertake — quality defined by detail.”

– John Leininger, President,
Leininger Cabinet & Woodworking, Inc.

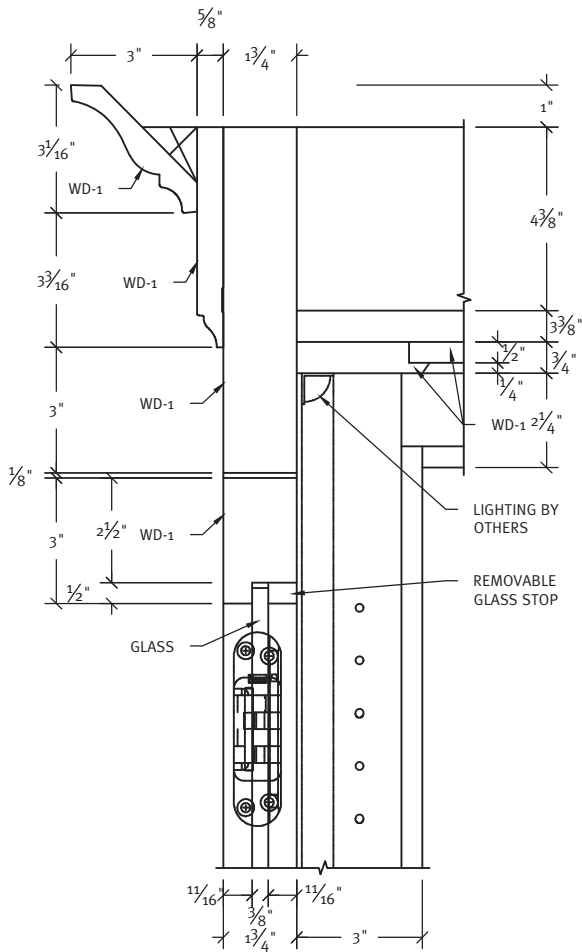


The overarching goal of the project was to have a finished product which allowed our members and guests to have a real sense of what the bluegrass state of Kentucky looks and feels like, summarizes Keith Reese, general manager of Valhalla Golf Club. “With bourbon being one of the staples which speaks to Kentucky, a fabulous bourbon bar was a

must. The look and feel of the wood chosen for the bar with some distinctive natural features captured the feel of what one would imagine a bourbon bar should feel like. The bar is just one component, the wood clad walls and ceiling as well as the attention to detail with finish work has made the room feel like My old Kentucky Home.”



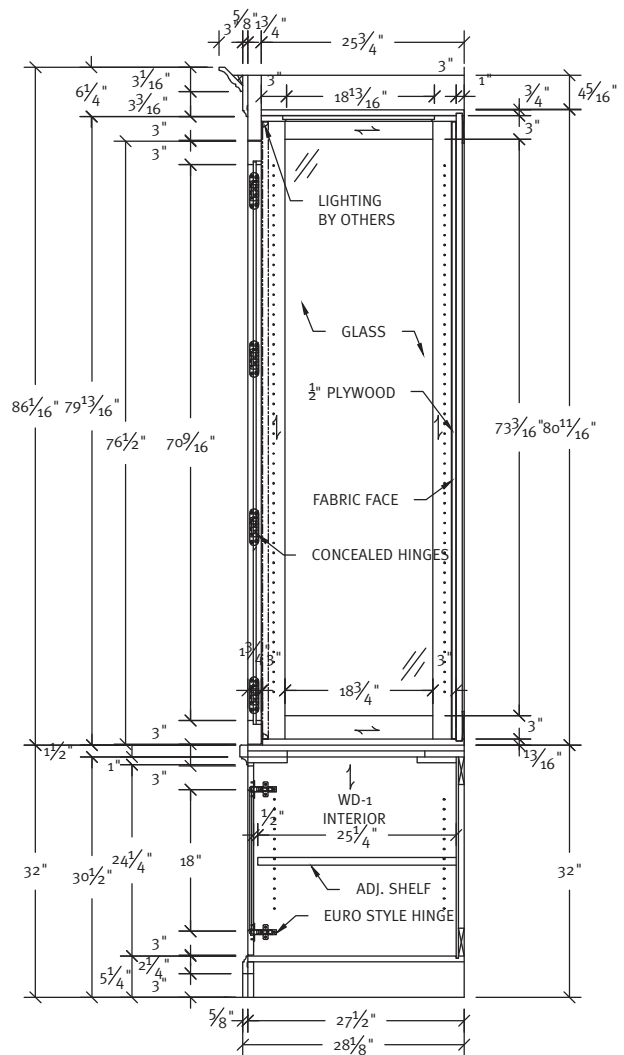
○ ELEVATION
@ LOUNGE BAR



○ DETAIL
@ TROPHY CABINET

The response from all who have visited Valhalla has been overwhelmingly positive, Reese continues. “Many of our long-time club members have said this is the clubhouse look and feel we should have had from day one. This is testament to the vision of our owners coupled

with the hard work of the design team and contractors. Now the dining and bar space are particularly inviting which is certainly a departure from the previous look of a very commercial type of space that was functional but could never tell the story the space tells now.”



○ SECTION
@ TROPHY CABINET

PROJECT:
Valhalla Golf Club Renovation
Louisville, KY

PROJECT OWNER:
Valhalla Golf Partners, LLC
Louisville, KY

WOODWORKER:
Leininger Cabinet & Woodworking, Inc.
Lexington, KY

ARCHITECT:
Rustem Kupi Architect
Delray Beach, FL

DESIGNER:
Swope Design
Louisville, KY

GENERAL CONTRACTOR:
Sullivan and Cozart
Louisville, KY

PHOTOGRAPHER:
Benjamin Norton
Louisville, KY