

Sweet Kentucky Home.

Prairie Style Residence
Resounds in Oak.



The entry foyer features
two-story high barrel vault
and three-story stair tower.



It was designed by Huston Design LLC of Miami, Florida, with input from the home's owners. Custom architectural woodwork for the project was fabricated by AWI member firm Leininger Cabinet & Woodworking, Inc., located in Lexington, Kentucky.

Per the owners' request, architectural style copies details of early 20th century Prairie style homes, specifically the low, horizontal lines, overhanging eaves, clerestory windows and open interior spaces. To accommodate both the period design and owners' love of contemporary design, the front portion of the house includes custom freestanding and inset Prairie style features, while the back portion hosts contemporary furniture, lighting and accents.

Large windows arranged in long ribbons provide views of the surrounding landscape. The house features two stories with this design cue, often found in a prairie-style floor plan, one providing a breathtaking view of the Kentucky River from the master bedroom.

Design Process

"Before design began," explains architect Michael Huston, "the owner expressed an interest in the Prairie Style of architecture developed by Frank Lloyd Wright. We looked at the Robie House in Chicago for inspiration and as a starting point for the design. However, the clients programming requirements and unique design objectives ensured that the house was not to be a copy of the classic work of Wright."

While expansive roof overhangs and horizontal lines recall the Robie House, many other architectural elements, such as the large Roman arches at the rear of the house incorporated to reflect the owners' success in the masonry contracting business, are unique to the overall design.

at a glance

MANUFACTURING MEMBER:

Leininger Cabinet & Woodworking, Inc.

LOCATION:

Lexington, Kentucky

FOUNDED:

1950

FACILITY:

40,000 square feet

A unique design issue of the residence had to do with scale, reports Huston. The client had a preference for large open spaces and high ceilings. At the same time, they were interested in a Prairie style which typically has lower ceilings and modestly sized rooms. "Bringing harmony to these two seemingly contradictory requirements became a primary design objective."

“What makes Leininger Cabinet and Woodworking different? Superior quality! Superior quality isn't just wishful thinking. It's the norm in every project we undertake — quality defined by detail.”

— John Leininger, OWNER





In the library woodwork, windows, lighting and masonry are carefully coordinated to produce a fully orchestrated space.



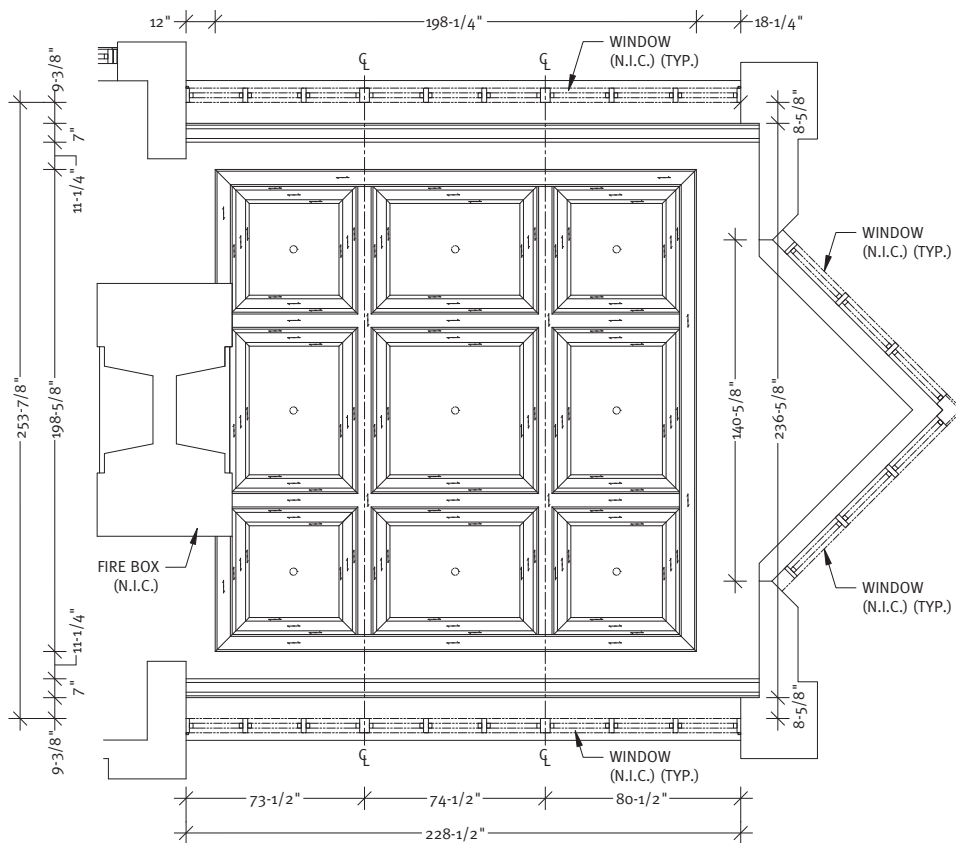
To address the issues of scale, Huston continues, the base ceiling level was raised in proportion to the other architectural elements such as windows and overhangs. From this baseline, the height was either emphasized or de-emphasized depending on the use of the space.

“For example, in the dining room and library, wood detailing and ceiling treatments are used to bring down the scale of the space and create a more intimate setting,” he explains. “The entry foyer, with its two-story high barrel vault, and the three-story stair tower, act as vertical accents to the mostly horizontal thrust of the spaces.”

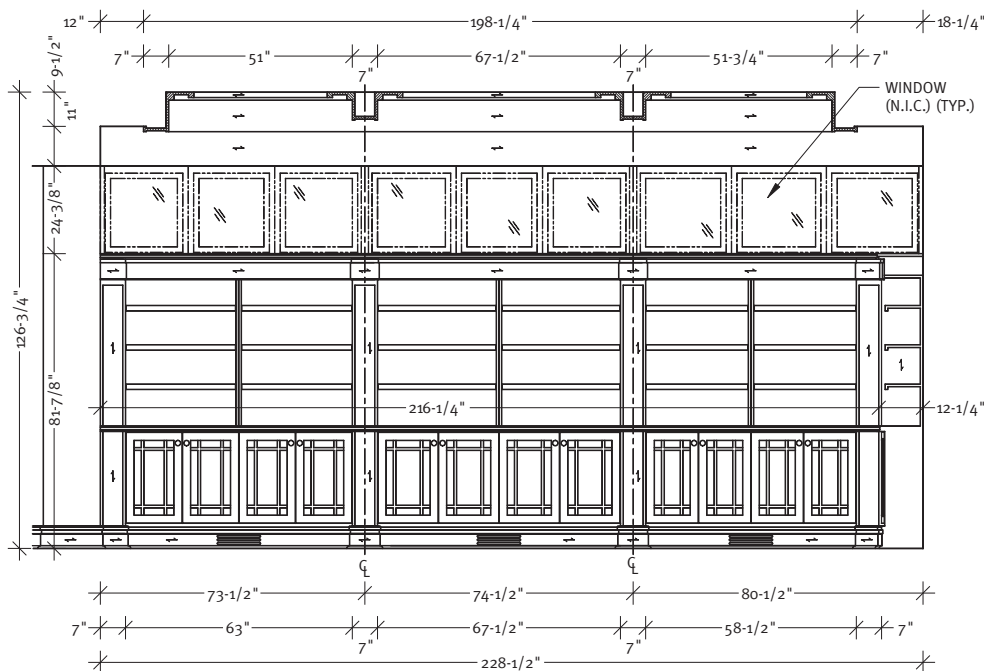
Elegance Of Wood

Custom architectural woodwork was an important element to achieving design objectives. According to John Leininger of Leininger Cabinet & Woodworking, the firm fabricated paneling, a conference table, desks, casework, standing and running trim, box beams, interior doors, clerestory windows and exterior entries for the residence. Custom cabinetry is featured in the living and dining rooms, kitchen and baths, and includes bookcases in the study and an entertainment center.

**QUARTER SAWN
WHITE OAK**



REFLECTED CEILING PLAN
@ Library



ELEVATION
@ Library

Most of the woodwork elements are of quarter sawn White Oak. Cabinets in the kitchen and a few other areas are fabricated of Cherry. The guest bathroom featured a Claro Walnut slab that the owner had shipped from the west coast. The glass tile in the guest bathroom was custom made as well.

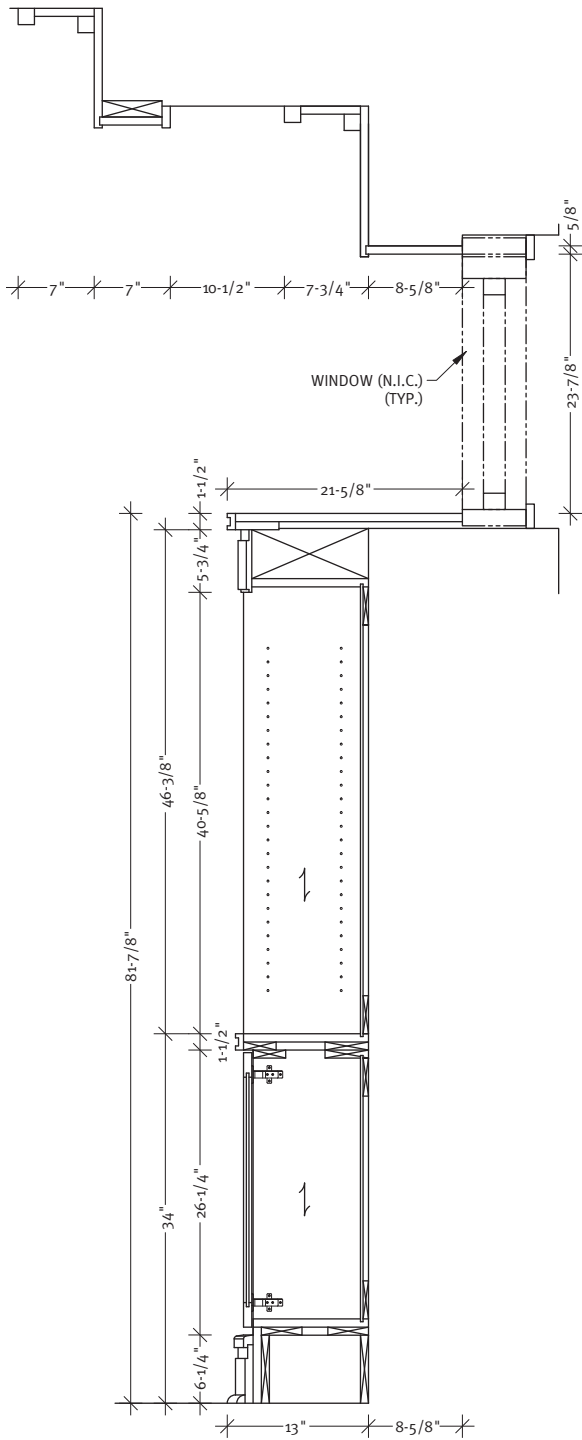
"We assisted the owners with layout and function of much of the cabinetry," points out Leininger. "And we resolved the final design and details of the cabinetry and paneling in the shop drawings in conjunction with the owners who both have a tremendous talent for design."

Team Favorites

"The huge pocket doors in the foyer are noteworthy as they were over nine feet high and almost five feet wide," says Leininger. "Keeping them flat enough to fit the pockets accurately and light enough to move easily proved to be a challenge. In addition, all of the casework was fairly intricate in design and required great attention to detail."

For Huston, the most impressive room in the house, he says, is the library. "This room is particularly successful because it illustrates a fully integrated design where the woodwork, windows, lighting and masonry are all carefully coordinated to produce a fully orchestrated space."

The kitchen is also noteworthy, he continues, because of its ability to accommodate a large catering operation, while still having enough warmth to function as a family gathering place.



SECTION
Library Bookcase





Favorites of the owners are the built-in pieces, which they say are both beautifully crafted and functional. “An important consideration in

Prairie Style design is the use of subtlety and simplicity and the formal dining room cabinets adhere well to this design principle.”

Team Synergy

“Residential work on this scale is all about meeting the customer’s expectations in both price and schedule,”

says Leininger. “Our efforts centered around accurate budgets to start with and then having plenty of well-thought out options. This



Cabinets in the kitchen are fabricated of Cherry.

type of work is like event planning so we worked closely with everyone to be sure things all came together at the same time.”

“The architect had a clear idea of how he wanted things to look, had a good understanding of arts and crafts design, and laid them out well. We worked out many of the details in shop drawings and submitted to the owner for approval. She also had a very clear idea of what she wanted and has a very good eye for color and pattern.”

It’s easy to work with talented people who know what they want, Leininger emphasizes.

Leininger Cabinet and Woodworking’s expertise in the development of the details, recommendations on materials and attention to high-quality fabrication and installation was critical to the success of the project, adds Huston. “The client set the bar high with the completion of the masonry structure. This high standard was upheld by the trades that followed, especially by the woodworking firm.”

As the owners sum it up, excellent working relationships were maintained throughout the project. “It was a long journey, but one we are all very proud to have witnessed.” 🍷

PROJECT:
Private Residence
Lexington, KY

WOODWORKER:
Leininger Cabinet & Woodworking Inc.
Lexington, KY

ARCHITECT:
Huston Design
Miami, FL

PHOTOGRAPHER:
Walt Roycraft
Nicholasville, KY